



**FOR IMMEDIATE RELEASE**

**CONTACT:**

**Stephanie Marthens**

Birmingham Association of REALTORS®

[Stephanie@BirminghamRealtors.com](mailto:Stephanie@BirminghamRealtors.com)

[BirminghamRealtors.com](http://BirminghamRealtors.com)

205-802-6064

**COVID-19 WILL BEGIN SHOWING ITS EFFECT IN THE 2<sup>ND</sup> QUARTER  
AS THE 1<sup>ST</sup> QUARTER FINISHED SOUNDLY**

[Central Alabama Report for March 2020 – Download Report Here](#)

**BIRMINGHAM, Ala. (April 2, 2020)** – As the 1st Quarter closes, residential real estate sales are not far off from this time last year. However, the effect of the COVID-19 virus will begin to show in the 2nd Quarter, as the market starts to see a reduction in sales activities. This is evident by the **30% decrease in showings**, in the Central Alabama market compared to this time last year.

Numbers for **March 2020** indicate there were **1182 homes sold** in the Central Alabama residential real estate market; this was only a **3.6% decrease** from 1,226 closings reported for the same period in 2019. The average price for closed sales was \$286,291, which is an **increase of 13.6%** compared to March 2020.

At the end of March, the area had **2,392 sales pending** compared to 2,001 at this time last year. Average days on the market was 60 days. The Birmingham Association of REALTORS® (BAR) is working closely with local, state, and national organizations and officials **to keep needed industry services open** to facilitate the closing of sales transactions.

**Active listings were 2,695**, which is a drop from 3,448 in the inventory of available homes. The area ended the 1st Quarter with a **2.5 months'** supply of inventory, which is a **30% drop** from 12 months ago. The decrease in inventory contributed to an **increase of 10% in the average listing price**. Buyers were still active in the market to purchase residential property, as evident from the absorption rate change from 28.4% to 40.7%.



Birmingham Association of REALTORS® (BAR) tracks market data for residential sales activity in the Central Alabama region for Blount, Chilton, Clay, Jefferson, Randolph, and Shelby Counties.

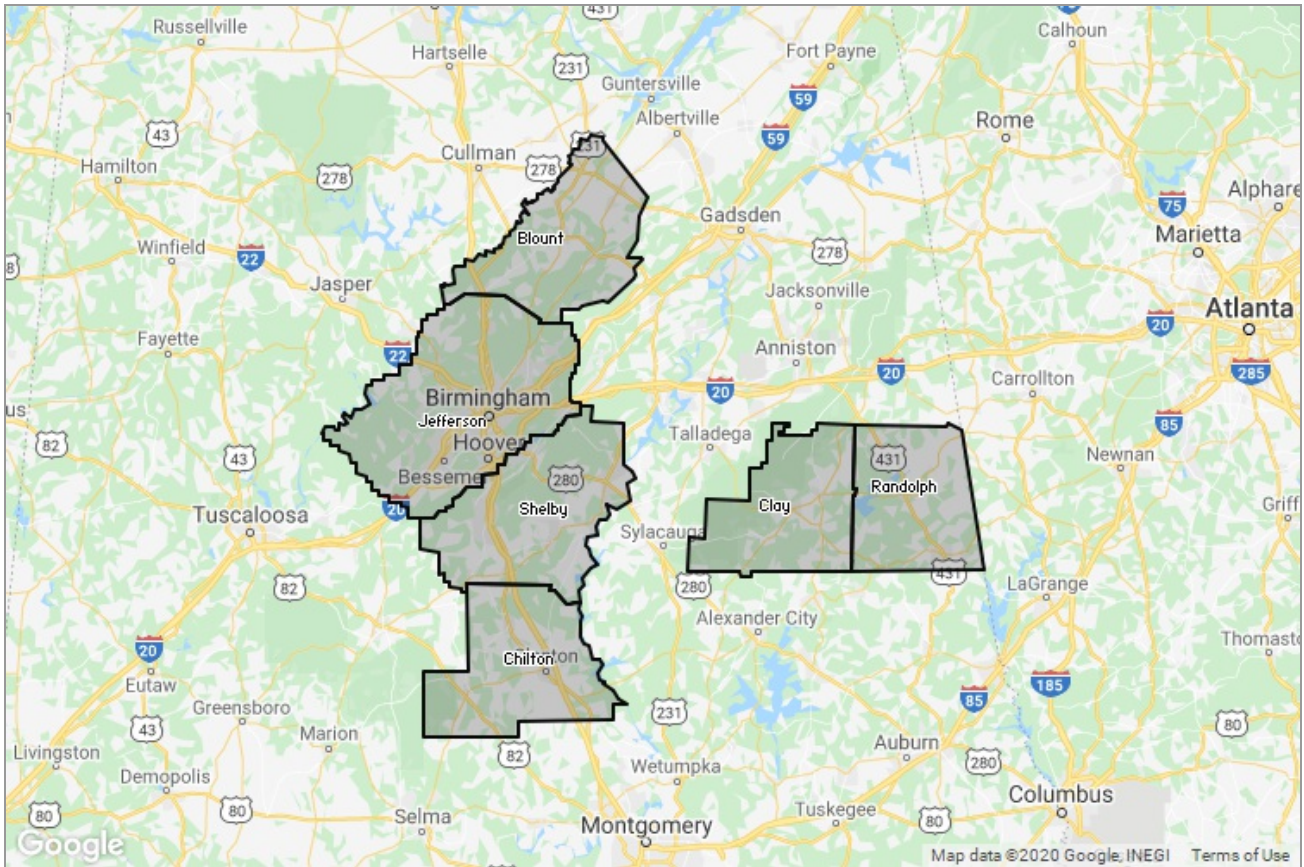
**Residential real estate sales by county for March 2020:**

<u>County</u>	<u>Sales</u>	<u>Average Price</u>	<u>Median DOM</u>
Blount	45	\$176,200	56
Chilton	24	\$175,900	64
Clay	2	\$121,000	161
Jefferson	728	\$288,200	53
Randolph	16	\$243,400	156
Shelby	367	\$304,800	64

###

The Birmingham Association of REALTORS® and its subsidiary Greater Alabama MLS are the primary resources for all real estate information in the Central Alabama area. BAR represents 4,500+ REALTORS® and serves as the primary voice for area property owners. Visit us at [www.birminghamrealtors.com](http://www.birminghamrealtors.com).

# Central Alabama Market Report March 2020



Presented by

**Birmingham Area Association of  
REALTORS® INC**

**Stephanie Marthens | VP of Communications**  
Stephanie@BirminghamRealtors.com

Other: <http://birminghamrealtors.com/>

3501 Independence Drive  
P. O. Box 59609  
Birmingham, AL 35209

## Summary of Key Listing and Sales Metrics

A summary of the key metrics selected to be included in the report. MLS sources where licensed.

Key Metrics	Mar 2020	Mar 2019	+ / -	YTD 2020	YTD 2019	+ / -
<b>Listing Activity Charts Metrics</b>						
New Listing Count	1,655	1,788	-7.4%	4,693	4,538	+3.4%
New Listing Volume	\$499,547,798	\$491,341,520	+1.7%	\$1,389,068,546	\$1,279,275,808	+8.6%
Active Listing Count	2,695	3,448	-21.8%	N/A	N/A	
Active Listing Volume	\$963,379,127	\$1,120,244,754	-14%	N/A	N/A	
Average Listing Price	\$357,469	\$324,897	+10%	\$341,397	\$319,708	+6.8%
Median Listing Price	\$275,000	\$245,900	+11.8%	\$262,958	\$241,898	+8.7%
Median Days in RPR	60	65	-7.7%	70.59	78.15	-9.7%
Months of Inventory	2.5	3.5	-30%	2.9	3.3	-11.3%
Absorption Rate	40.71%	28.48%	+12.2%	34%	30.14%	+3.9%
<b>Sales Activity Charts Metrics</b>						
New Pending Sales Count	1,629	1,854	-12.1%	4,770	4,426	+7.8%
New Pending Sales Volume	\$423,917,408	\$477,689,508	-11.3%	\$1,258,439,405	\$1,126,535,545	+11.7%
Pending Sales Count	2,392	2,001	+19.5%	N/A	N/A	
Pending Sales Volume	\$687,969,170	\$598,885,418	+14.9%	N/A	N/A	
Closed Sales Count	1,182	1,226	-3.6%	3,178	2,973	+6.9%
Closed Sales Volume	\$338,395,379	\$308,946,172	+9.5%	\$843,835,276	\$713,626,368	+18.2%
Average Sales Price	\$286,291	\$251,995	+13.6%	\$265,524	\$240,036	+10.6%
Median Sales Price	\$245,800	\$210,000	+17%	\$227,333	\$198,189	+14.7%

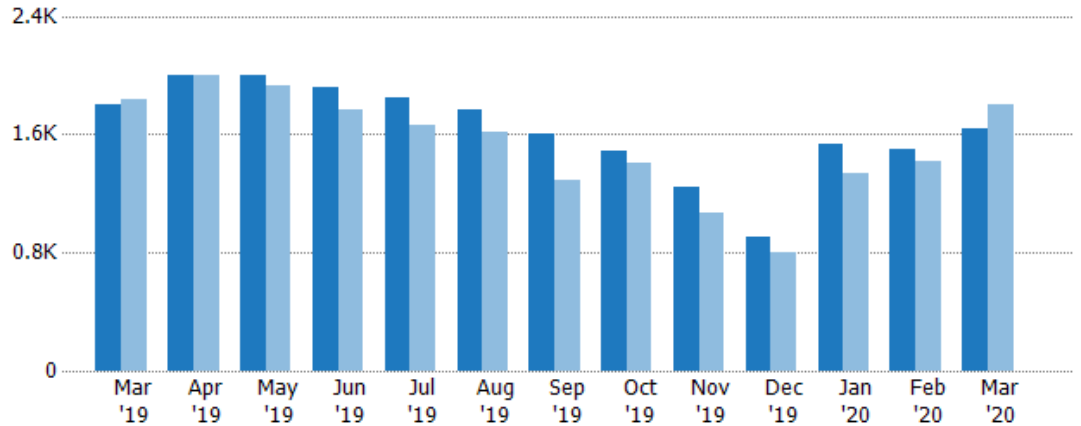
## New Listings

The number of new residential listings that were added each month.

Filters Used

State: AL  
County: 6 Selected

Month/Year	Count	% Chg.
Mar '20	1.64K	-8.9%
Mar '19	1.8K	-2%
Mar '18	1.84K	6.5%



	Mar '19	Apr '19	May '19	Jun '19	Jul '19	Aug '19	Sep '19	Oct '19	Nov '19	Dec '19	Jan '20	Feb '20	Mar '20
Current Year	1.8K	2K	2K	1.92K	1.85K	1.77K	1.61K	1.49K	1.24K	902	1.54K	1.5K	1.64K
Prior Year	1.84K	2K	1.93K	1.77K	1.66K	1.62K	1.29K	1.41K	1.07K	796	1.34K	1.42K	1.8K
Percent Change from Prior Year	-2%	0%	4%	9%	11%	9%	25%	5%	16%	13%	15%	6%	-9%

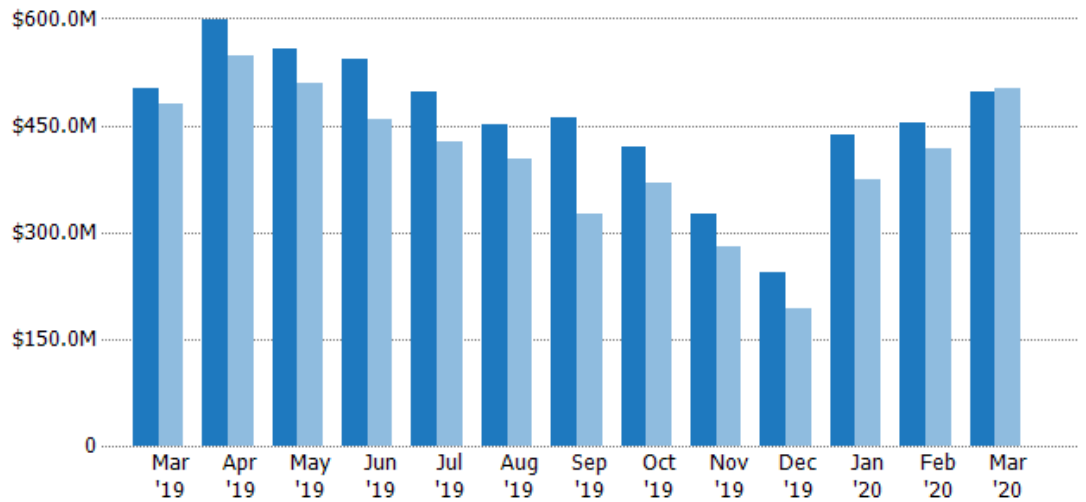
## New Listing Volume

The sum of the listing price of residential listings that were added each month.

Filters Used

State: AL  
County: 6 Selected

Month/Year	Volume	% Chg.
Mar '20	\$497M	-0.9%
Mar '19	\$501M	4.1%
Mar '18	\$481M	6.4%



	Mar '19	Apr '19	May '19	Jun '19	Jul '19	Aug '19	Sep '19	Oct '19	Nov '19	Dec '19	Jan '20	Feb '20	Mar '20
Current Year	\$501M	\$598M	\$559M	\$543M	\$496M	\$451M	\$460M	\$420M	\$326M	\$243M	\$436M	\$454M	\$497M
Prior Year	\$481M	\$549M	\$510M	\$458M	\$427M	\$403M	\$326M	\$369M	\$281M	\$194M	\$374M	\$417M	\$501M
Percent Change from Prior Year	4%	9%	10%	19%	16%	12%	41%	14%	16%	26%	16%	9%	-1%

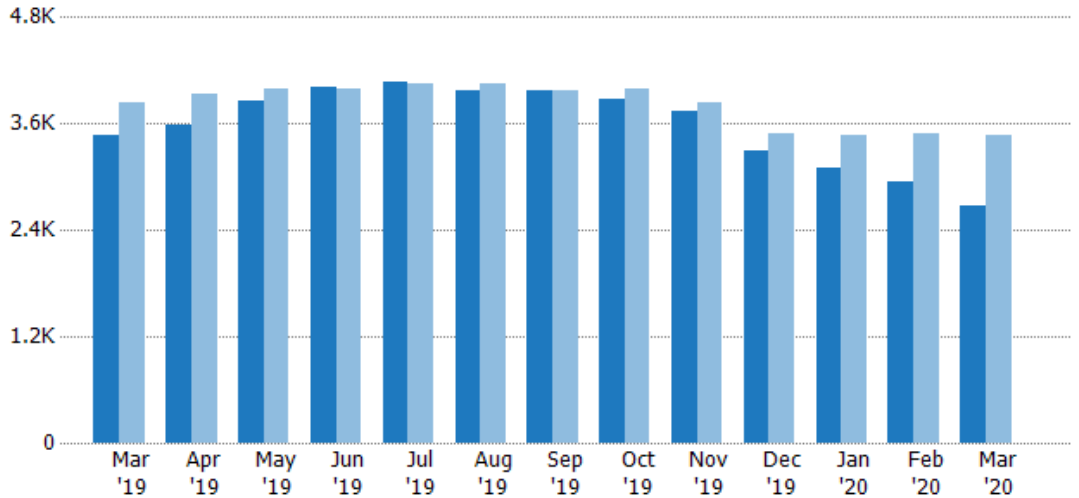
## Active Listings

The number of active residential listings at the end of each month.

**Filters Used**

State: AL  
County: 6 Selected

Month/Year	Count	% Chg.
Mar '20	2.67K	-23.1%
Mar '19	3.48K	-9.2%
Mar '18	3.83K	22.6%



	Mar '19	Apr '19	May '19	Jun '19	Jul '19	Aug '19	Sep '19	Oct '19	Nov '19	Dec '19	Jan '20	Feb '20	Mar '20
Current Year	3.48K	3.59K	3.85K	4.01K	4.06K	3.98K	3.98K	3.88K	3.74K	3.29K	3.1K	2.95K	2.67K
Prior Year	3.83K	3.93K	3.99K	4K	4.06K	4.05K	3.98K	3.99K	3.83K	3.5K	3.48K	3.48K	3.48K
Percent Change from Prior Year	-9%	-8%	-4%	0%	0%	-2%	0%	-3%	-3%	-6%	-11%	-15%	-23%

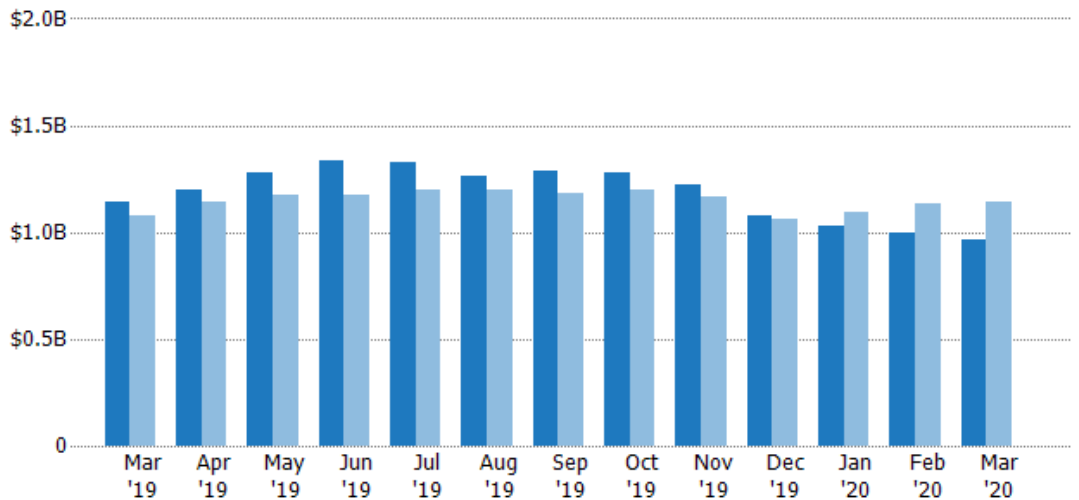
## Active Listing Volume

The sum of the listing price of active residential listings at the end of each month.

**Filters Used**

State: AL  
County: 6 Selected

Month/Year	Volume	% Chg.
Mar '20	\$963M	-15.8%
Mar '19	\$1.14B	6.4%
Mar '18	\$1.07B	12.4%



	Mar '19	Apr '19	May '19	Jun '19	Jul '19	Aug '19	Sep '19	Oct '19	Nov '19	Dec '19	Jan '20	Feb '20	Mar '20
Current Year	\$1.14B	\$1.2B	\$1.28B	\$1.34B	\$1.33B	\$1.26B	\$1.29B	\$1.28B	\$1.22B	\$1.08B	\$1.03B	\$999M	\$963M
Prior Year	\$1.07B	\$1.14B	\$1.17B	\$1.17B	\$1.2B	\$1.2B	\$1.18B	\$1.2B	\$1.17B	\$1.06B	\$1.09B	\$1.13B	\$1.14B
Percent Change from Prior Year	6%	5%	9%	14%	11%	6%	9%	7%	4%	1%	-6%	-12%	-16%

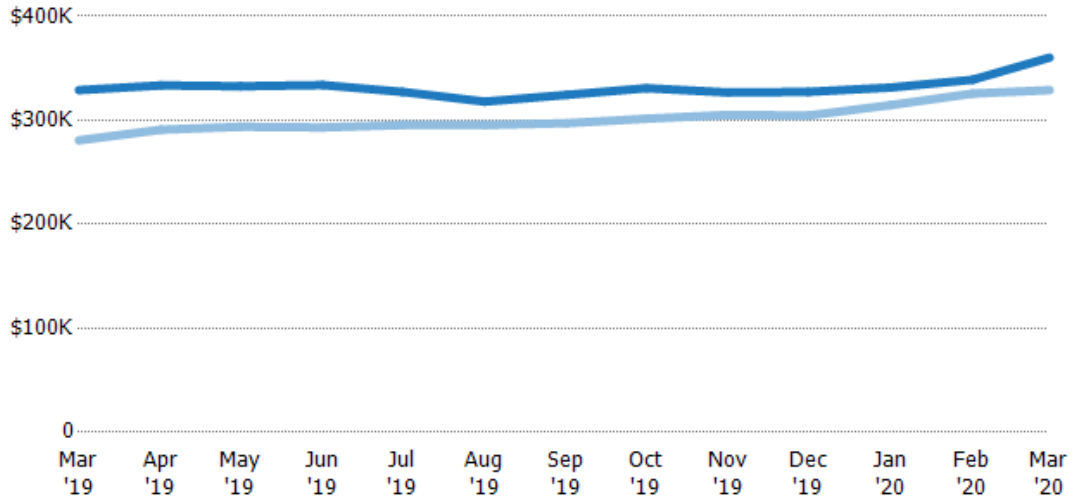
## Average Listing Price

The average listing price of active residential listings at the end of each month.

Filters Used

State: AL  
County: 6 Selected

Month/Year	Price	% Chg.
Mar '20	\$360K	9.5%
Mar '19	\$329K	17.2%
Mar '18	\$281K	-8.3%



Current Year	\$329K	\$334K	\$333K	\$334K	\$327K	\$318K	\$324K	\$331K	\$327K	\$327K	\$331K	\$339K	\$360K
Prior Year	\$281K	\$291K	\$294K	\$293K	\$295K	\$295K	\$297K	\$301K	\$305K	\$305K	\$315K	\$326K	\$329K
Percent Change from Prior Year	17%	15%	13%	14%	11%	8%	9%	10%	7%	8%	5%	4%	10%

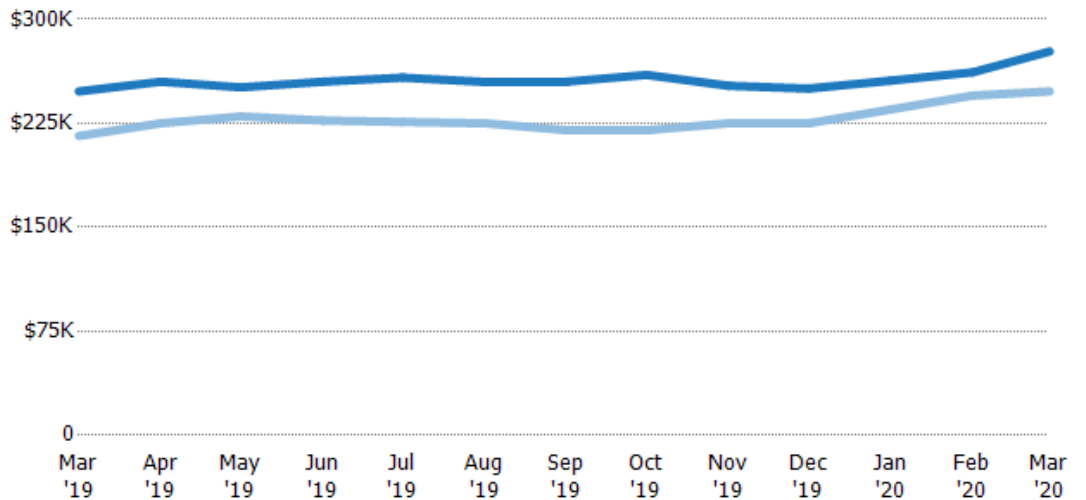
## Median Listing Price

The median listing price of active residential listings at the end of each month.

Filters Used

State: AL  
County: 6 Selected

Month/Year	Price	% Chg.
Mar '20	\$277K	11.6%
Mar '19	\$248K	14.9%
Mar '18	\$216K	-7.4%



Current Year	\$248K	\$255K	\$251K	\$255K	\$258K	\$255K	\$255K	\$260K	\$252K	\$250K	\$256K	\$262K	\$277K
Prior Year	\$216K	\$225K	\$230K	\$227K	\$226K	\$225K	\$220K	\$220K	\$225K	\$225K	\$235K	\$245K	\$248K
Percent Change from Prior Year	15%	13%	9%	12%	14%	13%	16%	18%	12%	11%	9%	7%	12%

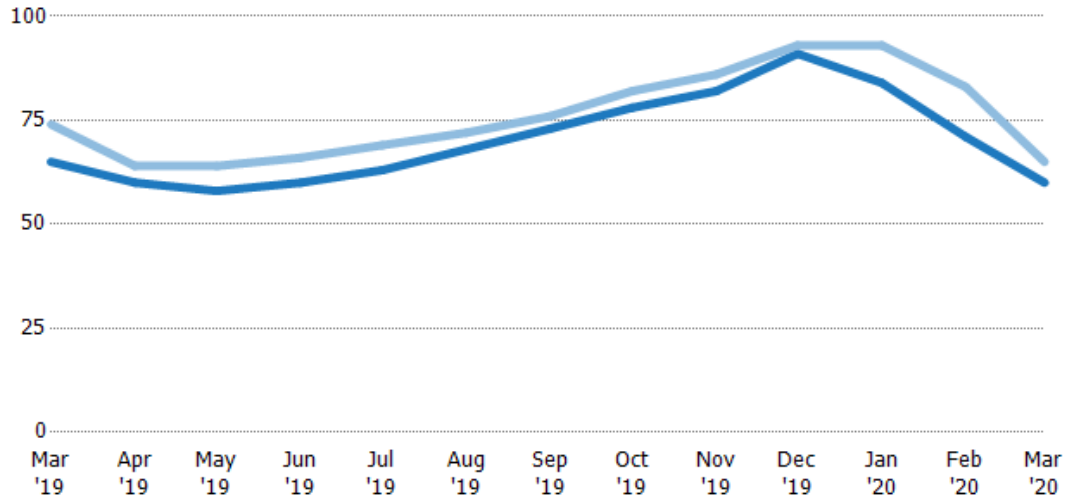
## Median Days in RPR

The median number of days between when residential properties are first displayed as active listings in RPR and when accepted offers have been noted in RPR.

**Filters Used**

State: AL  
County: 6 Selected

Month/Year	Days	% Chg.
Mar '20	60	-7.7%
Mar '19	65	-12.2%
Mar '18	74	-5.4%

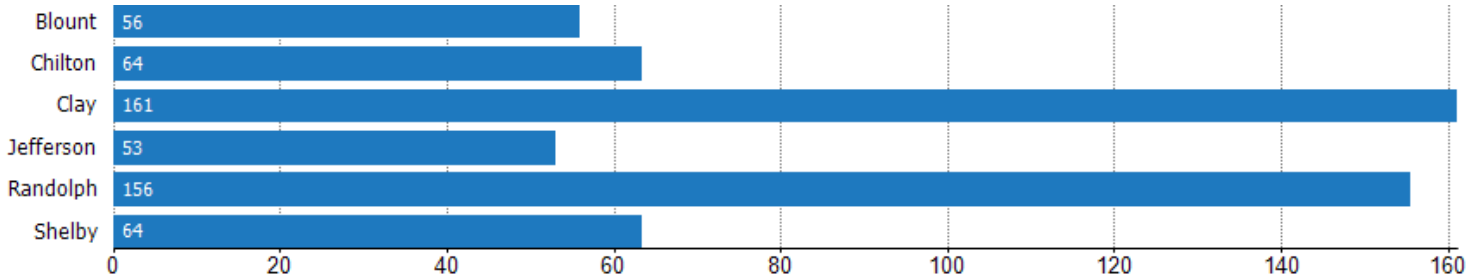


	Mar '19	Apr '19	May '19	Jun '19	Jul '19	Aug '19	Sep '19	Oct '19	Nov '19	Dec '19	Jan '20	Feb '20	Mar '20
Current Year	65	60	58	60	63	68	73	78	82	91	84	71	60
Prior Year	74	64	64	66	69	72	76	82	86	93	93	83	65
Percent Change from Prior Year	-12%	-6%	-9%	-9%	-9%	-6%	-4%	-5%	-5%	-2%	-10%	-14%	-8%

## Median Days in RPR (By County)

The median number of days between when residential properties are first displayed as active listings in RPR and when accepted offers have been noted in RPR by county.

Filters Used: State: AL; County: 6 Selected





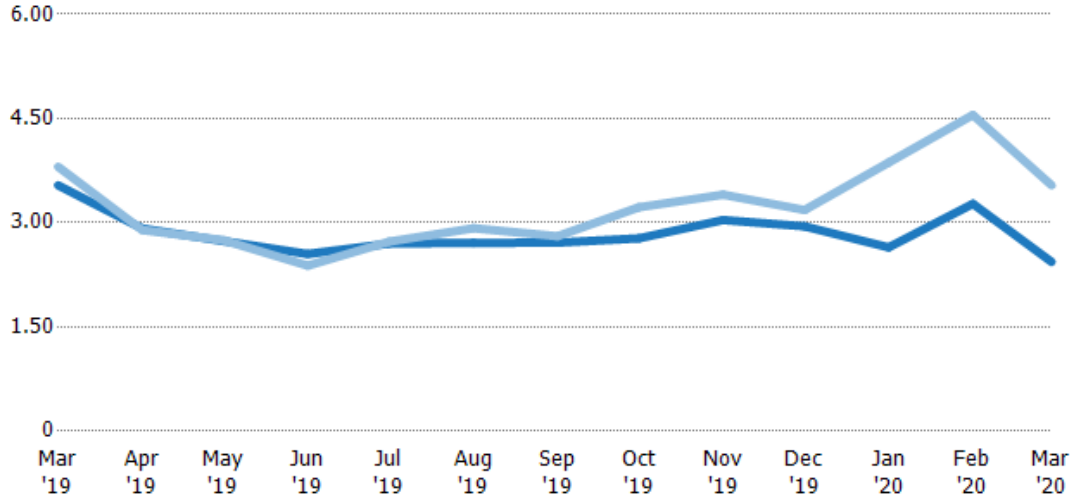
## Months of Inventory

The number of months it would take to exhaust active listings at the current sales rate.

Filters Used

State: AL  
County: 6 Selected

Month/Year	Months	% Chg.
Mar '20	2.44	-31.2%
Mar '19	3.54	-7%
Mar '18	3.81	34.3%



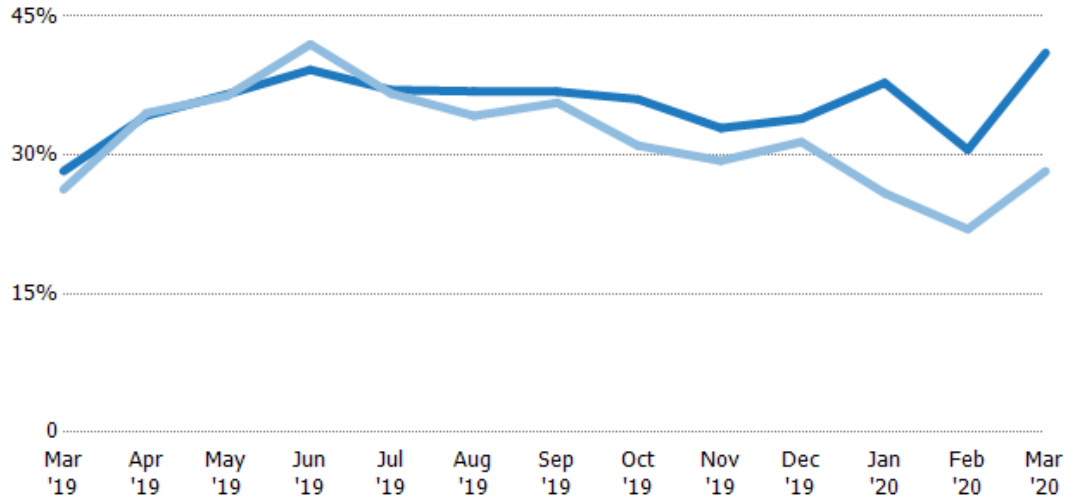
	Mar '19	Apr '19	May '19	Jun '19	Jul '19	Aug '19	Sep '19	Oct '19	Nov '19	Dec '19	Jan '20	Feb '20	Mar '20
Current Year	3.54	2.92	2.74	2.55	2.7	2.71	2.71	2.78	3.04	2.95	2.65	3.27	2.44
Prior Year	3.81	2.89	2.75	2.38	2.73	2.92	2.81	3.22	3.4	3.18	3.87	4.55	3.54
Percent Change from Prior Year	-7%	1%	0%	7%	-1%	-7%	-3%	-14%	-11%	-7%	-32%	-28%	-31%

## Absorption Rate

The percentage of inventory sold per month.

**Filters Used**

State: AL  
County: 6 Selected



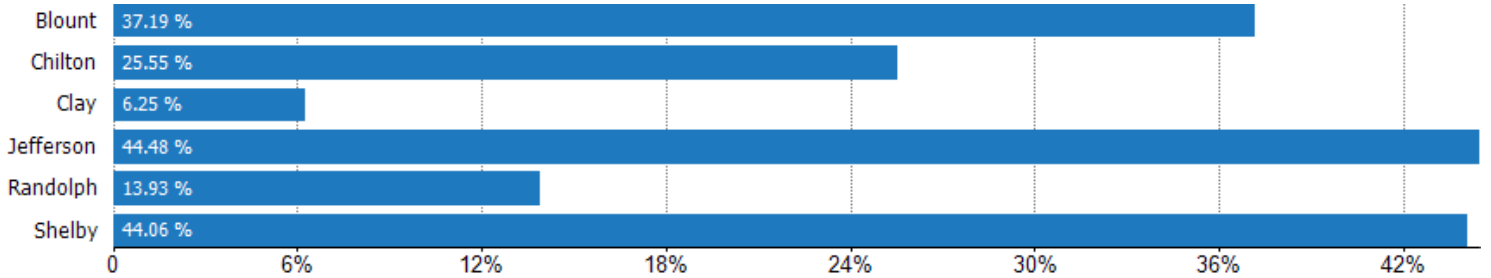
Month/Year	Rate	Chg.
Mar '20	41%	-12.8%
Mar '19	28%	-2%
Mar '18	26%	-25.5%

	Mar '19	Apr '19	May '19	Jun '19	Jul '19	Aug '19	Sep '19	Oct '19	Nov '19	Dec '19	Jan '20	Feb '20	Mar '20
Current Year	28%	34%	37%	39%	37%	37%	37%	36%	33%	34%	38%	31%	41%
Prior Year	26%	35%	36%	42%	37%	34%	36%	31%	29%	31%	26%	22%	28%
Change from Prior Year	-2%	0%	0%	3%	0%	-3%	-1%	-5%	-4%	-3%	-12%	-9%	-13%

## Absorption Rate (By County)

The percentage of the inventory sold during the last month by county.

Filters Used: State: AL; County: 6 Selected



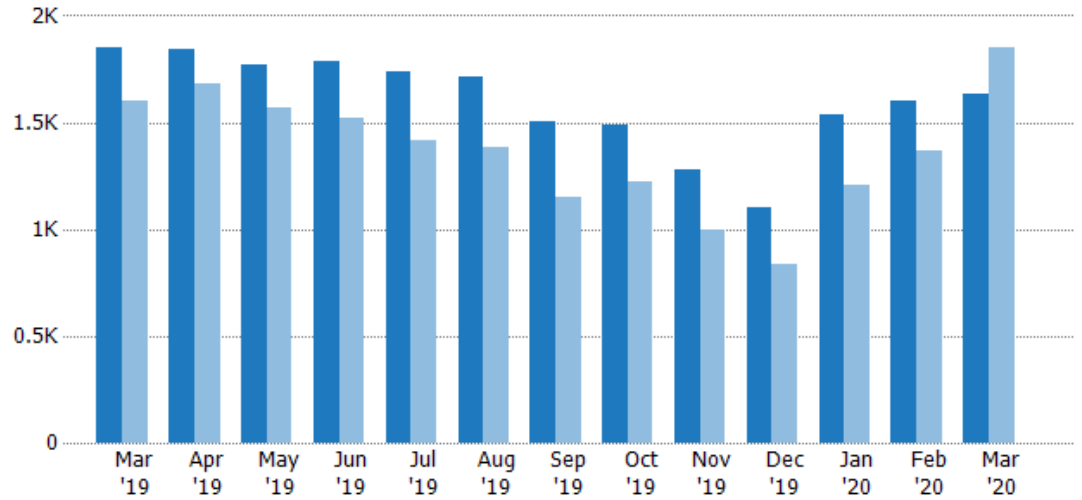
## New Pending Sales

The number of residential properties with accepted offers that were added each month.

### Filters Used

State: AL  
 County: 6 Selected  
 Property Type:  
 Condo/Townhouse/Apt, Single  
 Family Residence

Month/ Year	Count	% Chg.
Mar '20	1.63K	-12.1%
Mar '19	1.85K	15.7%
Mar '18	1.6K	-2.3%



Current Year	1.85K	1.84K	1.77K	1.78K	1.74K	1.72K	1.51K	1.49K	1.28K	1.1K	1.54K	1.6K	1.63K
Prior Year	1.6K	1.68K	1.57K	1.52K	1.41K	1.39K	1.15K	1.23K	1K	839	1.21K	1.37K	1.85K
Percent Change from Prior Year	16%	10%	13%	18%	23%	24%	31%	22%	28%	31%	28%	17%	-12%

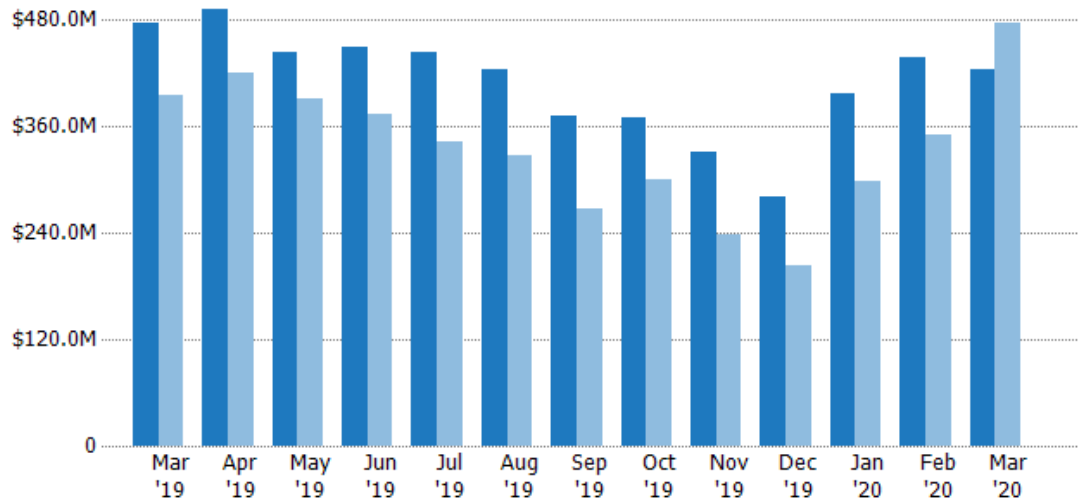
## New Pending Sales Volume

The sum of the sales price of residential properties with accepted offers that were added each month.

### Filters Used

State: AL  
 County: 6 Selected  
 Property Type:  
 Condo/Townhouse/Apt, Single  
 Family Residence

Month/ Year	Volume	% Chg.
Mar '20	\$424M	-11.3%
Mar '19	\$478M	20.6%
Mar '18	\$396M	-5.9%



Current Year	\$478M	\$493M	\$443M	\$450M	\$443M	\$424M	\$373M	\$369M	\$331M	\$280M	\$397M	\$438M	\$424M
Prior Year	\$396M	\$421M	\$392M	\$373M	\$344M	\$327M	\$268M	\$300M	\$238M	\$203M	\$298M	\$351M	\$478M
Percent Change from Prior Year	21%	17%	13%	21%	29%	30%	39%	23%	39%	38%	33%	25%	-11%

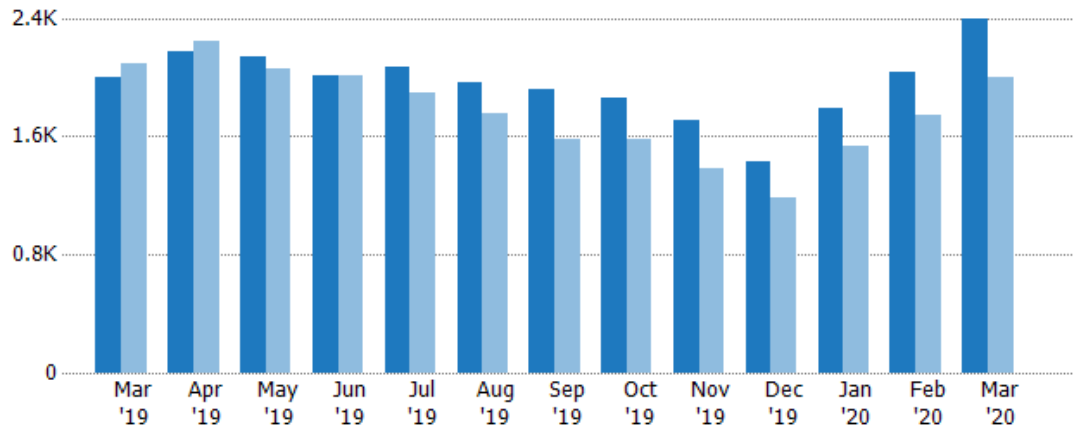
## Pending Sales

The number of residential properties with accepted offers that were available at the end each month.

### Filters Used

State: AL  
 County: 6 Selected  
 Property Type:  
 Condo/Townhouse/Apt, Single  
 Family Residence

Month/ Year	Count	% Chg.
Mar '20	2.39K	19.5%
Mar '19	2K	-4.3%
Mar '18	2.09K	-5.3%



Current Year	2K	2.17K	2.14K	2.01K	2.07K	1.96K	1.91K	1.86K	1.71K	1.42K	1.79K	2.04K	2.39K
Prior Year	2.09K	2.24K	2.06K	2.01K	1.9K	1.76K	1.58K	1.58K	1.38K	1.18K	1.53K	1.74K	2K
Percent Change from Prior Year	-4%	-3%	4%	0%	9%	12%	21%	17%	24%	20%	17%	17%	20%

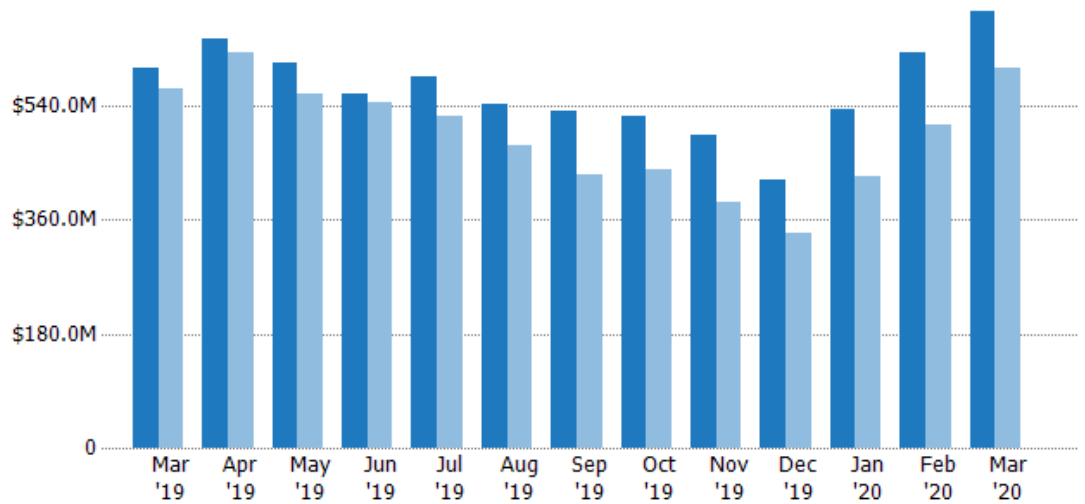
## Pending Sales Volume

The sum of the sales price of residential properties with accepted offers that were available at the end of each month.

### Filters Used

State: AL  
 County: 6 Selected  
 Property Type:  
 Condo/Townhouse/Apt, Single  
 Family Residence

Month/ Year	Volume	% Chg.
Mar '20	\$688M	14.9%
Mar '19	\$599M	5.5%
Mar '18	\$568M	-9.9%



Current Year	\$599M	\$647M	\$607M	\$560M	\$586M	\$544M	\$532M	\$524M	\$494M	\$424M	\$536M	\$624M	\$688M
Prior Year	\$568M	\$623M	\$559M	\$545M	\$523M	\$477M	\$431M	\$439M	\$388M	\$338M	\$428M	\$510M	\$599M
Percent Change from Prior Year	6%	4%	9%	3%	12%	14%	23%	19%	27%	25%	25%	22%	15%

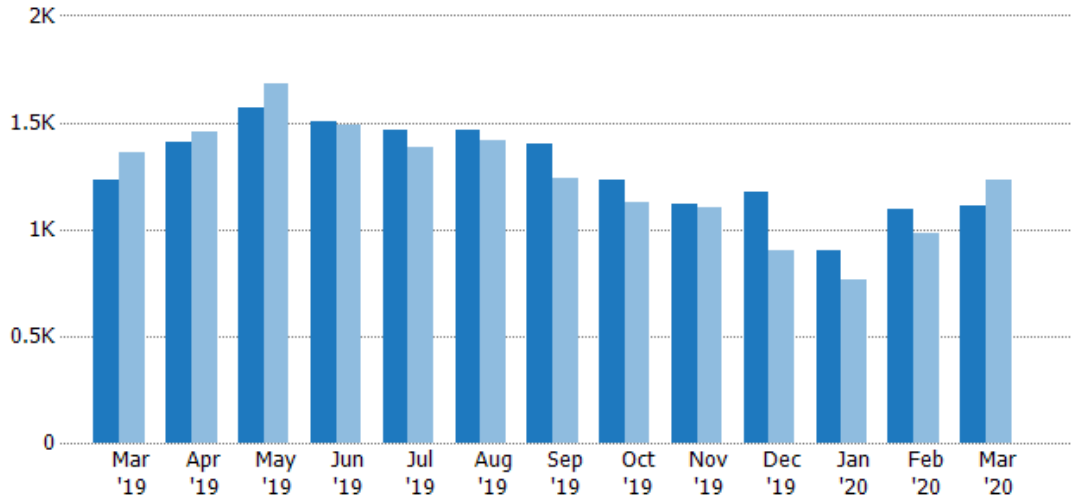
## Closed Sales

The total number of residential properties sold each month.

Filters Used

State: AL  
County: 6 Selected

Month/Year	Count	% Chg.
Mar '20	1.11K	-9.9%
Mar '19	1.23K	-9.1%
Mar '18	1.36K	-2.9%



Current Year	1.23K	1.41K	1.57K	1.51K	1.47K	1.47K	1.4K	1.23K	1.12K	1.17K	901	1.1K	1.11K
Prior Year	1.36K	1.45K	1.68K	1.49K	1.39K	1.42K	1.24K	1.13K	1.1K	899	765	982	1.23K
Percent Change from Prior Year	-9%	-3%	-6%	1%	6%	3%	13%	9%	2%	30%	18%	12%	-10%

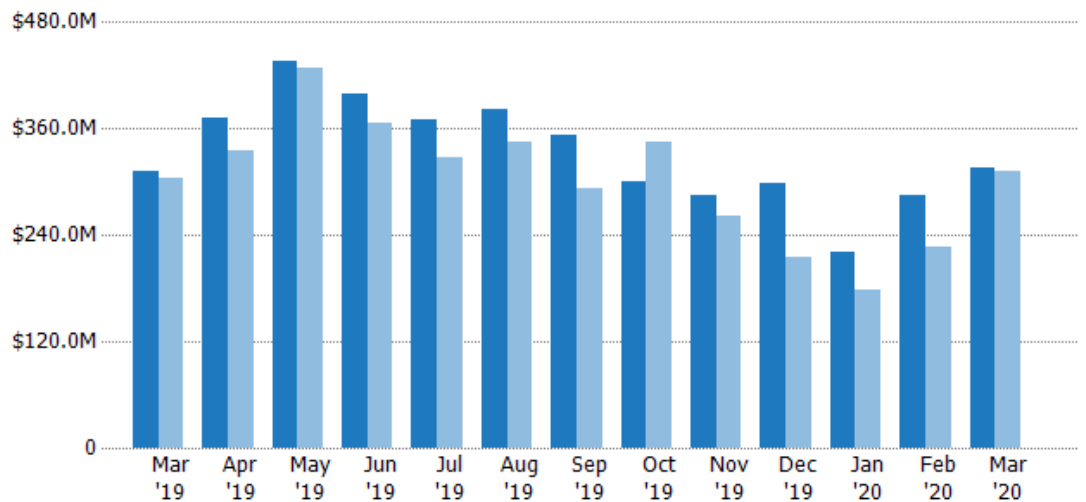
## Closed Sales Volume

The sum of the sales price of residential properties sold each month.

Filters Used

State: AL  
County: 6 Selected

Month/Year	Volume	% Chg.
Mar '20	\$315M	1.4%
Mar '19	\$311M	2.5%
Mar '18	\$304M	-7.3%



Current Year	\$311M	\$373M	\$436M	\$399M	\$369M	\$382M	\$353M	\$301M	\$285M	\$299M	\$221M	\$285M	\$315M	
Prior Year	\$304M	\$334M	\$429M	\$367M	\$328M	\$344M	\$293M	\$346M	\$262M	\$215M	\$178M	\$227M	\$311M	
Percent Change from Prior Year		2%	12%	2%	9%	13%	11%	21%	-13%	9%	39%	24%	26%	1%

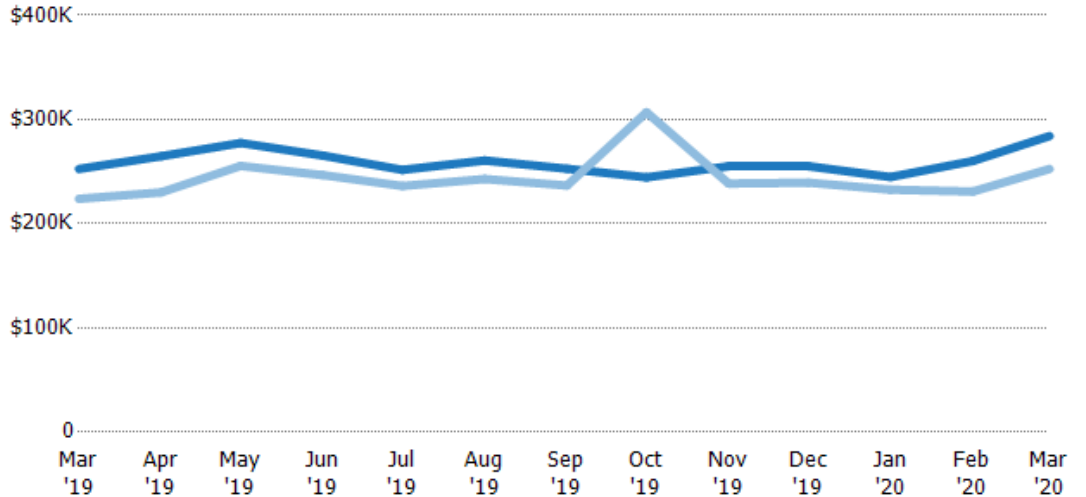
## Average Sales Price

The average sales price of the residential properties sold each month.

**Filters Used**

State: AL  
County: 6 Selected

Month/Year	Price	% Chg.
Mar '20	\$284K	12.5%
Mar '19	\$253K	12.8%
Mar '18	\$224K	-4.5%



Current Year	\$253K	\$265K	\$277K	\$265K	\$252K	\$261K	\$253K	\$244K	\$255K	\$255K	\$245K	\$260K	\$284K
Prior Year	\$224K	\$230K	\$255K	\$247K	\$236K	\$243K	\$237K	\$307K	\$239K	\$239K	\$233K	\$231K	\$253K
Percent Change from Prior Year	13%	15%	9%	8%	7%	7%	7%	-20%	7%	7%	5%	13%	13%

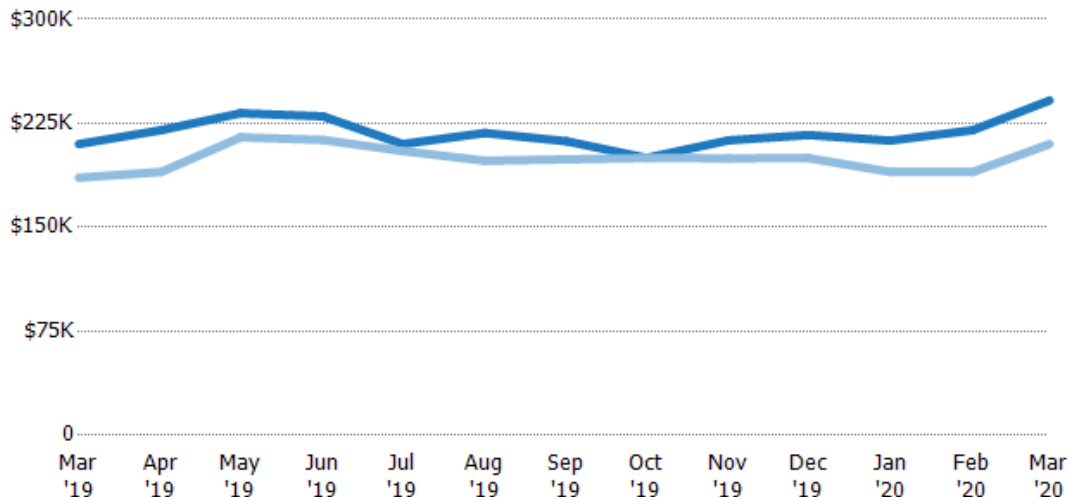
## Median Sales Price

The median sales price of the residential properties sold each month.

**Filters Used**

State: AL  
County: 6 Selected

Month/Year	Price	% Chg.
Mar '20	\$241K	15%
Mar '19	\$210K	13.1%
Mar '18	\$186K	-6.9%



Current Year	\$210K	\$220K	\$232K	\$230K	\$210K	\$218K	\$212K	\$200K	\$213K	\$217K	\$213K	\$220K	\$241K
Prior Year	\$186K	\$190K	\$215K	\$213K	\$205K	\$198K	\$199K	\$200K	\$200K	\$200K	\$190K	\$190K	\$210K
Percent Change from Prior Year	13%	16%	8%	8%	2%	10%	7%	0%	7%	8%	12%	16%	15%

## Sales Activity by ZIP

Mar 2020

ZIP	Pendings (Month End)	Pending Volume (Month End)	Sales	Sales Volume	Avg Sales Price	Median Sales Price	Avg Sales Price per Sq Ft	Median Sales Price per Sq Ft	Median Days In RPR
35031	6	\$924,700	2	\$190,100	\$95,050	\$95,050	\$62	\$62	88
35049	4	\$521,300	3	\$255,000	\$85,000	\$75,000	\$56	\$37	33
35063			1	\$20,000	\$20,000	\$20,000	\$27	\$27	154
35079	31	\$4,787,300	14	\$2,393,426	\$170,959	\$158,250	\$122	\$125	5
35097	1	\$154,900	3	\$233,500	\$77,833	\$65,000	\$48	\$32	2
35121	20	\$3,442,200	9	\$1,522,800	\$169,200	\$148,000	\$102	\$94	91
35133	7	\$1,052,200	4	\$769,900	\$192,475	\$179,950	\$122	\$115	138
35146			1	\$440,000	\$440,000	\$440,000	\$111	\$111	82
35172	1	\$119,900	1	\$296,500	\$296,500	\$296,500	\$119	\$119	3
35180	19	\$3,740,900	3	\$635,900	\$211,967	\$171,000	\$116	\$121	3
35952	2	\$161,900	3	\$512,000	\$170,667	\$145,000	\$98	\$106	8
35980			1	\$101,000	\$101,000	\$101,000	\$72	\$72	79

## Sales Activity by ZIP

Mar 2020

ZIP	Pendings (Month End)	Pending Volume (Month End)	Sales	Sales Volume	Avg Sales Price	Median Sales Price	Avg Sales Price per Sq Ft	Median Sales Price per Sq Ft	Median Days In RPR
35045	17	\$3,353,900	12	\$2,107,200	\$175,600	\$172,500	\$96	\$104	44
35046	6	\$1,806,599	1	\$350,000	\$350,000	\$350,000	\$127	\$127	7
35085	7	\$1,052,500	3	\$350,800	\$116,933	\$149,900	\$73	\$86	23
35115	2	\$459,390	2	\$385,900	\$192,950	\$192,950	\$64	\$64	89
35171	8	\$1,714,500	5	\$855,300	\$171,060	\$179,000	\$95	\$114	11
36091	4	\$1,408,800	1	\$25,000	\$25,000	\$25,000	\$20	\$20	26



## Sales Activity by ZIP

Mar 2020

ZIP	Pendings (Month End)	Pending Volume (Month End)	Sales	Sales Volume	Avg Sales Price	Median Sales Price	Avg Sales Price per Sq Ft	Median Sales Price per Sq Ft	Median Days In RPR
36251	1	\$79,000	1	\$42,000	\$42,000	\$42,000	\$29	\$29	222
36266	3	\$414,600	1	\$200,000	\$200,000	\$200,000	\$133	\$133	220

## Sales Activity by ZIP

Mar 2020

ZIP	Pendings (Month End)	Pending Volume (Month End)	Sales	Sales Volume	Avg Sales Price	Median Sales Price	Avg Sales Price per Sq Ft	Median Sales Price per Sq Ft	Median Days In RPR
35005	9	\$1,017,600	6	\$653,300	\$108,883	\$104,950	\$84	\$86	18
35006	4	\$644,900	1	\$245,000	\$245,000	\$245,000	\$136	\$136	60
35020	18	\$3,973,370	12	\$1,142,000	\$95,167	\$75,300	\$74	\$54	30
35022	68	\$16,379,270	34	\$7,769,021	\$228,501	\$232,060	\$121	\$120	54
35023	44	\$5,916,766	19	\$2,124,200	\$111,800	\$90,000	\$69	\$67	73
35062	6	\$1,083,100	1	\$92,700	\$92,700	\$92,700	\$75	\$75	147
35064	11	\$890,702	3	\$153,200	\$51,067	\$9,500	\$28	\$7	103
35068	36	\$7,508,808	16	\$3,150,200	\$196,888	\$220,900	\$124	\$133	90
35071	41	\$9,408,490	38	\$7,837,170	\$206,241	\$186,000	\$115	\$110	15
35073	2	\$169,400	1	\$125,350	\$125,350	\$125,350	\$46	\$46	37
35091	11	\$2,870,200	7	\$2,121,580	\$303,083	\$299,900	\$122	\$116	26
35094	18	\$4,608,524	14	\$2,076,900	\$148,350	\$158,450	\$110	\$113	13
35111	43	\$10,131,637	11	\$2,624,573	\$238,598	\$226,000	\$117	\$111	47
35116	9	\$2,482,300	4	\$542,300	\$135,575	\$154,450	\$87	\$94	29
35117	16	\$3,322,799	9	\$1,597,200	\$177,467	\$167,000	\$116	\$122	4
35118	2	\$343,400	2	\$167,000	\$83,500	\$83,500	\$71	\$71	32
35126	48	\$8,052,450	20	\$3,212,300	\$160,615	\$147,750	\$104	\$104	11
35127	27	\$4,745,400	8	\$1,210,560	\$151,320	\$166,650	\$101	\$101	22
35173	105	\$35,315,095	54	\$16,271,562	\$301,325	\$304,500	\$133	\$133	9
35180	11	\$1,290,600	5	\$828,400	\$165,680	\$87,000	\$97	\$62	57
35203	14	\$4,858,000	8	\$2,318,000	\$289,750	\$271,500	\$238	\$228	4
35204	8	\$276,400	1	\$6,000	\$6,000	\$6,000	\$6	\$6	14
35205	24	\$8,751,700	17	\$5,135,200	\$302,071	\$265,000	\$169	\$175	13
35206	22	\$2,985,200	17	\$1,883,955	\$110,821	\$105,000	\$74	\$66	13
35207	4	\$112,900	1	\$17,000	\$17,000	\$17,000	\$17	\$17	49
35208	15	\$842,200	11	\$759,550	\$69,050	\$35,000	\$43	\$21	60
35209	70	\$29,010,460	49	\$25,764,821	\$525,813	\$418,000	\$233	\$238	11
35210	48	\$12,624,705	18	\$4,062,672	\$225,704	\$219,200	\$130	\$130	14
35211	34	\$5,675,386	11	\$1,934,072	\$175,825	\$221,000	\$123	\$154	2
35212	13	\$1,986,499	10	\$1,638,500	\$163,850	\$114,500	\$100	\$88	10
35213	42	\$23,714,797	28	\$17,398,017	\$621,358	\$480,500	\$239	\$236	2
35214	29	\$3,057,400	2	\$331,000	\$165,500	\$165,500	\$109	\$109	42
35215	99	\$11,687,299	31	\$3,198,245	\$103,169	\$95,000	\$72	\$74	12
35216	73	\$27,334,725	52	\$17,440,399	\$335,392	\$268,200	\$167	\$140	6
35217	9	\$641,200	9	\$794,200	\$88,244	\$37,500	\$59	\$39	14
35218	6	\$838,500	1	\$59,000	\$59,000	\$59,000	\$39	\$39	52
35221	5	\$175,300	2	\$37,150	\$18,575	\$18,575	\$18	\$18	11
35222	22	\$8,119,100	18	\$6,417,900	\$356,550	\$302,500	\$197	\$194	3

Continues on next page →

## Sales Activity by ZIP

Mar 2020

← Continued from previous page

ZIP	Pendings (Month End)	Pending Volume (Month End)	Sales	Sales Volume	Avg Sales Price	Median Sales Price	Avg Sales Price per Sq Ft	Median Sales Price per Sq Ft	Median Days In RPR
35223	23	\$11,269,500	22	\$16,099,200	\$731,782	\$638,250	\$249	\$234	5
35224	5	\$253,850	1	\$107,000	\$107,000	\$107,000	\$89	\$89	177
35226	101	\$35,965,505	53	\$17,636,750	\$332,769	\$295,000	\$152	\$147	7
35228	12	\$698,400	4	\$363,300	\$90,825	\$91,950	\$62	\$57	7
35233	3	\$752,300	2	\$549,000	\$274,500	\$274,500	\$283	\$283	2
35234	3	\$719,000	1	\$230,000	\$230,000	\$230,000	\$146	\$146	78
35235	51	\$6,986,300	16	\$2,285,650	\$142,853	\$141,250	\$93	\$92	24
35242	40	\$19,725,171	13	\$6,810,318	\$523,871	\$485,000	\$170	\$168	5
35243	31	\$18,842,400	26	\$11,463,000	\$440,885	\$376,500	\$188	\$178	5
35244	162	\$67,738,370	39	\$13,577,204	\$348,133	\$342,500	\$146	\$143	13

## Sales Activity by ZIP

Mar 2020

ZIP	Pendings (Month End)	Pending Volume (Month End)	Sales	Sales Volume	Avg Sales Price	Median Sales Price	Avg Sales Price per Sq Ft	Median Sales Price per Sq Ft	Median Days In RPR
36274	4	\$552,400	6	\$1,148,000	\$191,333	\$126,000	\$86	\$68	95
36278	11	\$1,836,600	8	\$2,527,900	\$315,988	\$267,250	\$183	\$178	175
36280	3	\$550,900	2	\$220,000	\$110,000	\$110,000	\$99	\$99	99

## Sales Activity by ZIP

Mar 2020

ZIP	Pendings (Month End)	Pending Volume (Month End)	Sales	Sales Volume	Avg Sales Price	Median Sales Price	Avg Sales Price per Sq Ft	Median Sales Price per Sq Ft	Median Days In RPR
35007	60	\$13,292,445	36	\$8,090,627	\$224,740	\$203,783	\$118	\$116	11
35022	3	\$1,368,900	2	\$865,000	\$432,500	\$432,500	\$143	\$143	116
35040	86	\$17,503,466	39	\$7,080,235	\$181,544	\$166,150	\$111	\$112	8
35043	63	\$18,257,827	43	\$12,463,715	\$289,854	\$274,475	\$132	\$125	48
35051	18	\$3,189,890	12	\$2,769,860	\$230,822	\$199,125	\$103	\$103	5
35078	13	\$2,607,330	4	\$832,895	\$208,224	\$206,963	\$97	\$98	71
35080	81	\$24,559,422	39	\$10,410,240	\$266,929	\$284,000	\$131	\$128	25
35114	15	\$4,384,200	9	\$1,984,400	\$220,489	\$194,900	\$125	\$123	3
35115	40	\$6,943,992	12	\$2,124,276	\$177,023	\$183,800	\$101	\$104	48
35124	62	\$16,917,900	38	\$10,771,690	\$283,466	\$249,200	\$135	\$132	7
35143	7	\$1,395,700	4	\$1,409,400	\$352,350	\$387,250	\$221	\$209	21
35147	14	\$3,632,194	7	\$1,693,900	\$241,986	\$220,000	\$131	\$129	5
35178	3	\$244,800	1	\$585,000	\$585,000	\$585,000	\$104	\$104	147
35186	5	\$1,093,681	3	\$767,700	\$255,900	\$270,000	\$121	\$109	32
35242	139	\$57,706,142	77	\$31,466,500	\$408,656	\$380,000	\$147	\$144	14
35243			1	\$670,000	\$670,000	\$670,000	\$240	\$240	53
35244	110	\$56,029,744	40	\$16,566,096	\$414,152	\$383,474	\$160	\$158	10